



NORTH CAROLINA  
GLOBAL TRANSPARK

NORTH CAROLINA  
**GLOBAL  
TRANSPARK**

**Allen M. Thomas**  
**Executive Director**





- **2,500-ACRE  
MULTIMODAL PARK**

- **11,500 FT. RUNWAY. \*2ND  
LONGEST IN THE EASTERN  
UNITED STATES**

- **5,800 ACRES.  
“SHOVEL-READY”**

- **5.8 MILES OF RAIL**

- **TRANSLOAD FACILITY**

- **INTERSTATE CONNECTIVITY**

- **FOREIGN TRADE ZONE #214**

- **NC OPPORTUNITY ZONE**

# NORTH CAROLINA **GLOBAL**TRANSPARK





# NORTH CAROLINA GLOBAL TRANSPARK

- **1,420 Employees**
- **12 Tenants**
- **9 NCGTP Staff**
- **Workforce: 21 Counties**



# STRATEGIC PLAN

## Strategies

*Physical*

*Environment*

*Workforce*

*Partnership*

*Marketing*



### Aerospace & Automotive

- Aircraft & auto components
- Aviation MRO



### Defense

- Defense contractors
- Contracted aircraft testing



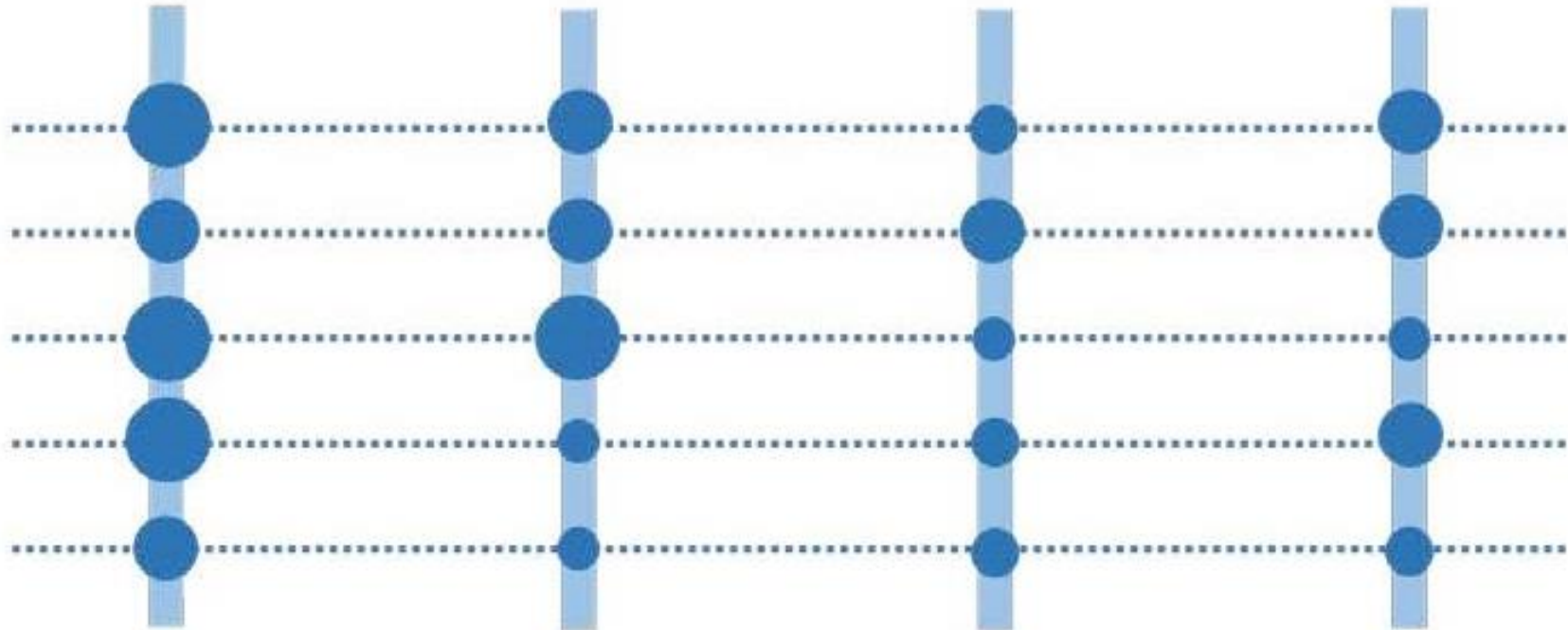
### Agribusiness & Food Science

- Advanced food manufacturing
- Food safety research



### Government

- Government facilities
- Emergency services



**Note:** Size of circle indicates relative maturity of each strategic element.

# ACTION PLAN

- 1. Expand the Role of NCGTP in Regional Workforce Training**
- 2. Broaden Logistics Support Services Performed & Offered at NCGTP**
- 3. Grow Core Focus on Aerospace Components Industry**
- 4. Attract Defense Industry Users to NCGTP Site**
- 5. Establish a Base for Agribusiness & Food Science at NCGTP**
- 6. Consolidate Government Uses at NCGTP**
- 7. Create and Implement a Best in Class Marketing Plan**

# ACTION PLAN

**8. Maintain and Enhance NCGTP Land and Capital Assets**

**9. Expand Utility Capacity as Needed to Match Potential User Needs**

**10. Maintain and Enhance NCGTP Aviation and Aerospace Facilities**

**11. Enhance NCGTP Highway Access and Connectivity**

**12. Enhance Rail Access and Connectivity**

**13. Enhance Port Access and Connectivity**

**14. Secure Funding and Resources to Support Business Plan Objectives**

# WORKFORCE





# Training & Innovation



DEVELOPING A  
MANUFACTURING  
WORKFORCE

[lccma.lenoircc.edu](http://lccma.lenoircc.edu)

The Customized Training Program (CTP) at Lenoir Community College provides education, training and support services for new, expanding and existing business and industry in Lenoir, Jones, and Greene Counties.

- Job Growth
- Technology Investment
- Productivity Enhancement



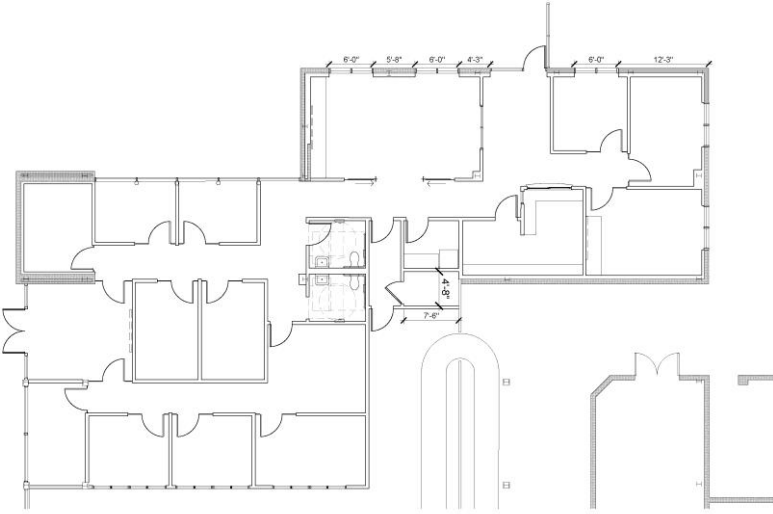
**NC STATE**  
**UNIVERSITY**

# INFRASTRUCTURE





# FACILITIES IMPROVEMENTS

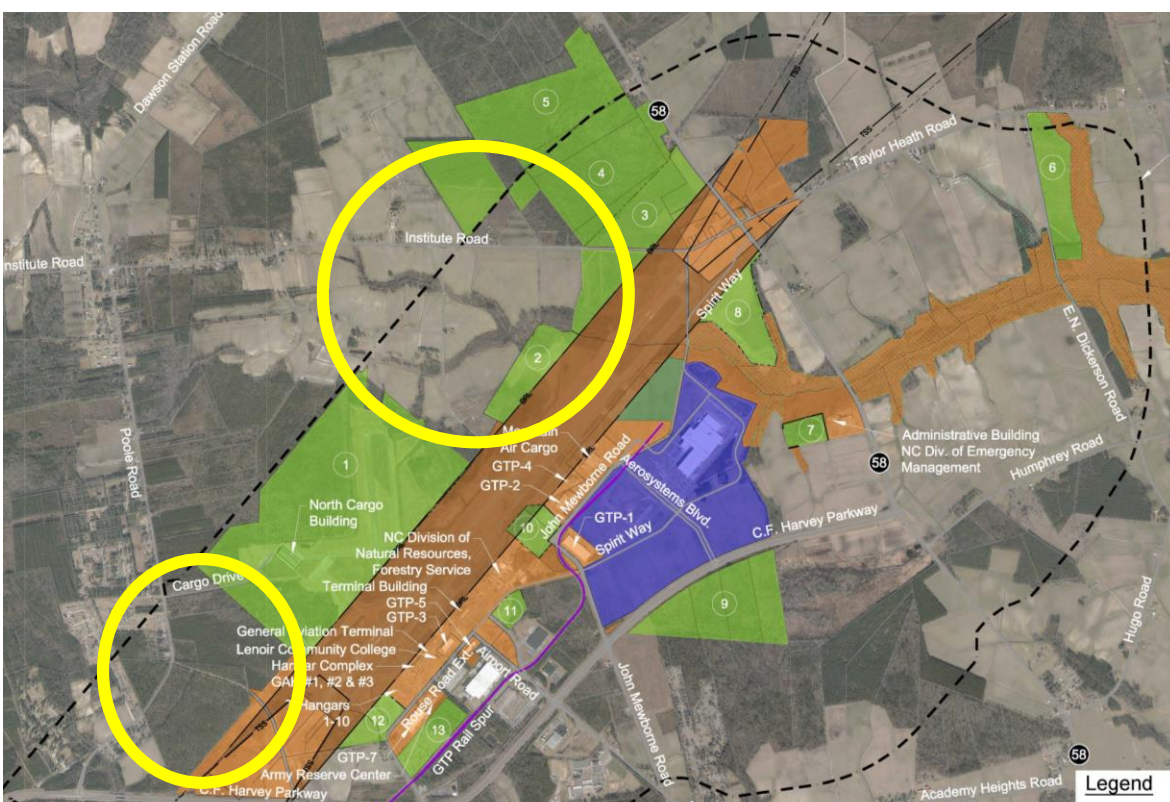
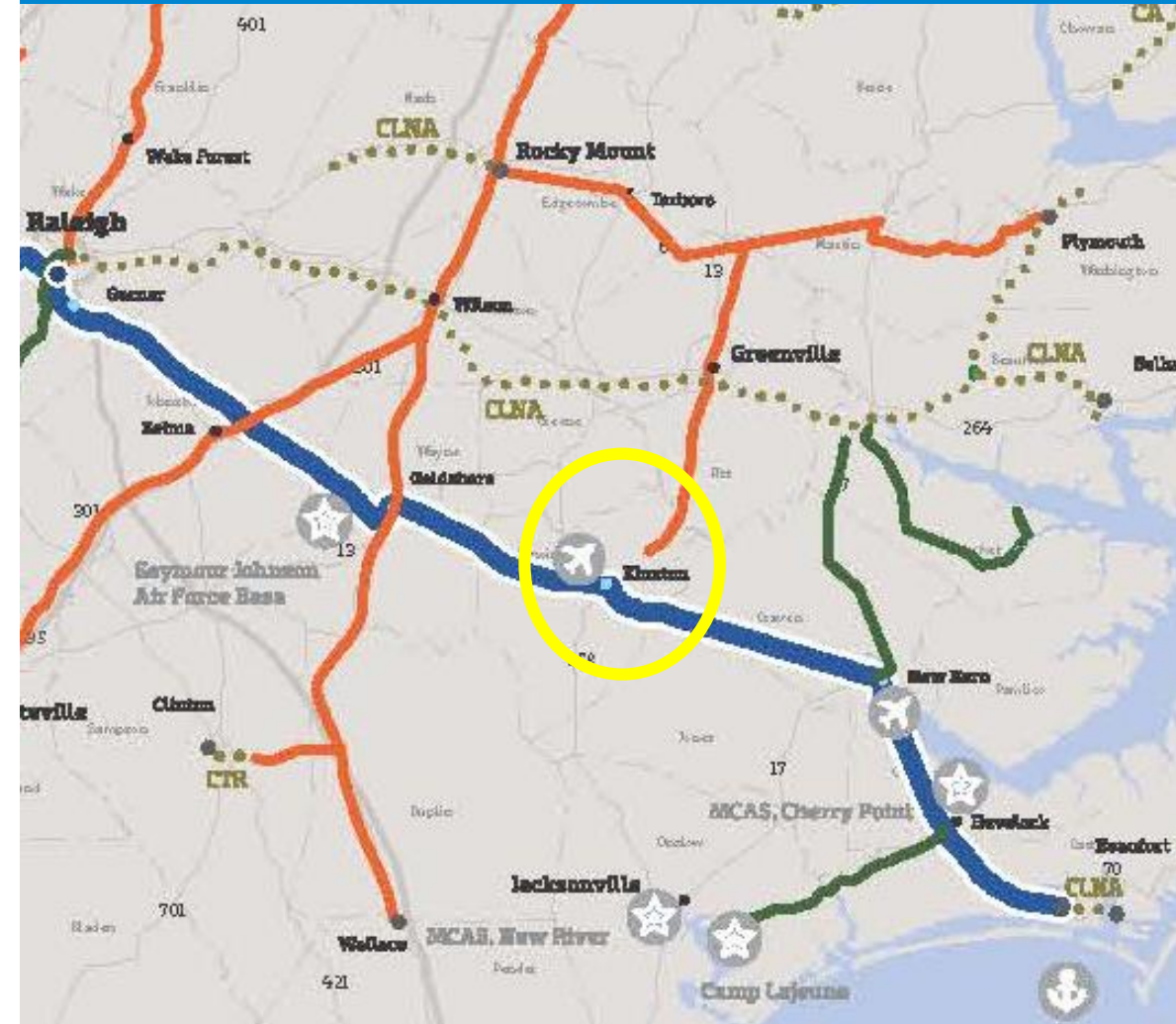


- RUNWAY RESURFACE
- STORM STRUCTURAL DAMAGE RECOVERY
- DEFERRED MAINTENANCE
- PARTNER PROJECTS
- UTILITY UPGRADE NEEDS





# RAIL CONNECTIVITY



## MEGA SITE

- CONTIGUOUS ACREAGE
- MULTI-MODAL (INLAND PORT)
- UTILITIES
- MARKET BY EDPNC

NORTH CAROLINA **GLOBAL**  
TRANSPARK

# AEROSPACE & DEFENSE







## Spirit AeroSystems \$55.7 M Expansion



## MRO Opportunities



## F-35 Impacts





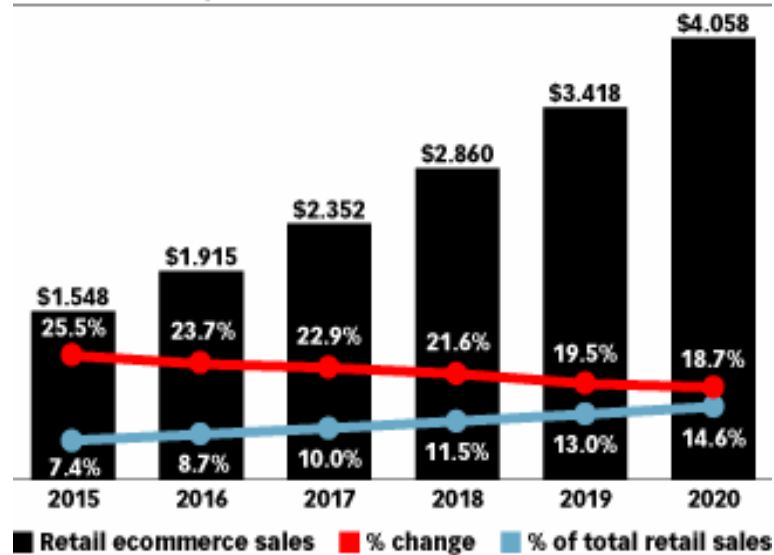
# AIR CARGO e-Commerce



# E-Commerce is Exploding

## Retail Ecommerce Sales Worldwide, 2015-2020

trillions, % change and % of total retail sales



Note: includes products or services ordered using the internet via any device, regardless of the method of payment or fulfillment; excludes travel and event tickets

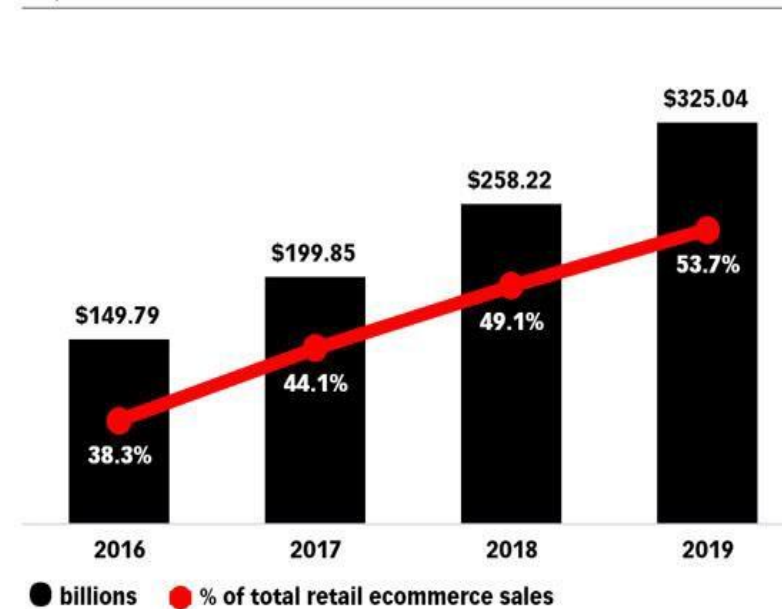
Source: eMarketer, Aug 2016

213201

www.eMarketer.com

## Amazon Retail Ecommerce Sales

US, 2016-2019



Source: eMarketer, June 2018

www.eMarketer.com

Increasing cross-border volumes – where to process the packages?

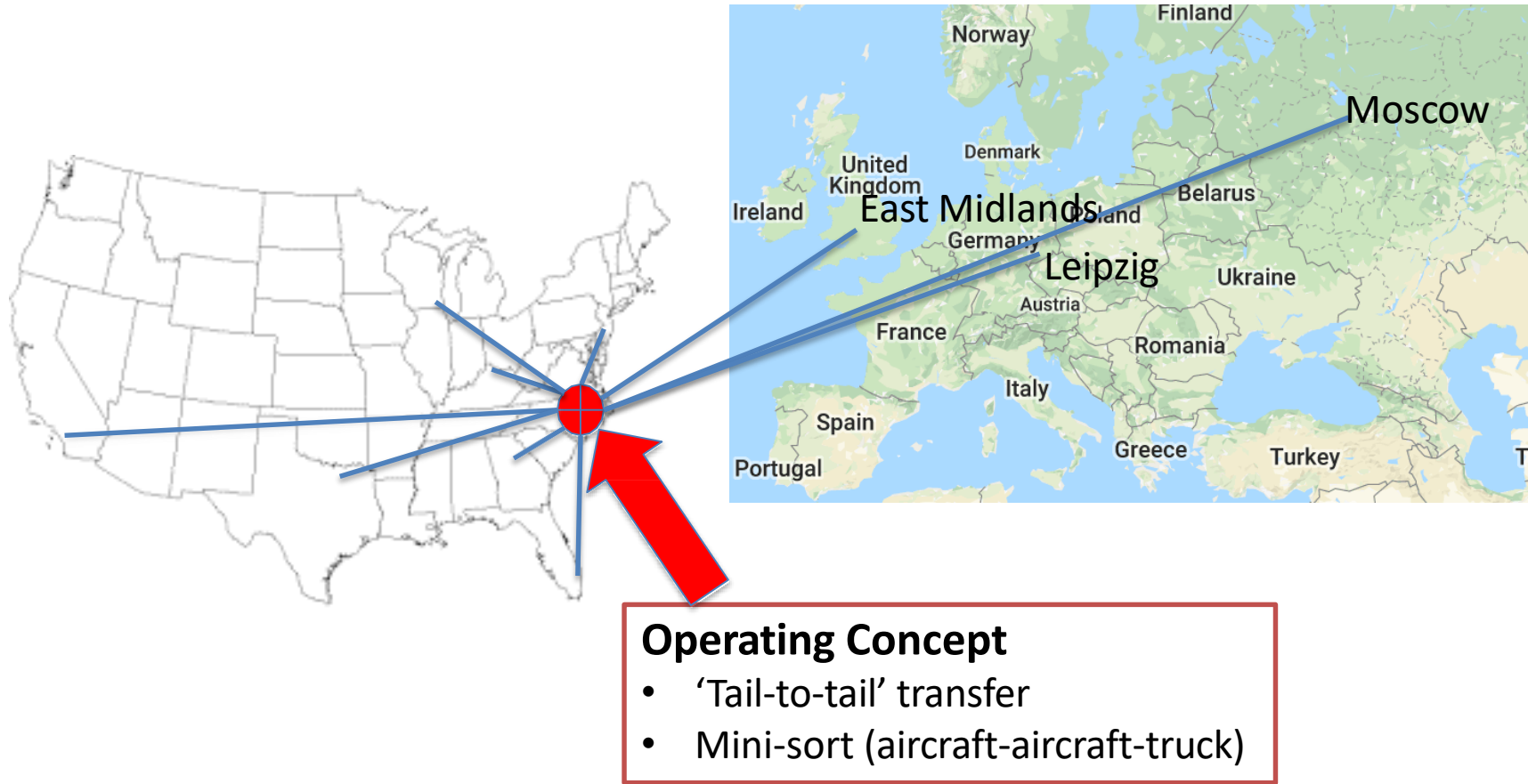
# East-Coast Multimodal Hub at NCGTP is Better

Airport	Flight Congestion	Weather Delays	Cargo Handling Capacity	Available Land	Open Airspace
Kinston	Green	Green	Green	Green	Green
Raleigh	Yellow	Yellow	Yellow	Orange	Orange
Charlotte	Red	Orange	Red	Red	Red
Greensboro	Green	Green	Green	Green	Orange
Greer	Green	Green	Yellow	Orange	Orange
Baltimore	Orange	Red	Orange	Orange	Red
Philadelphia	Red	Orange	Red	Red	Red

**22,000** departing military within hours of Kinston – looking for good employment



# East-Coast Gateway Concept



# East-Coast Gateway at NC Global TransPark is Better

Comparative Flight Cost Analysis			
US Airport	Major Network Airports	Additional Annual Block Hours	Additional Annual Flight Operating Cost
Kinston/GTP	Leipzig (DE), East Midlands (UK), Moscow (RU), Ontario (US)	-	\$ -
Atlanta		1,282.60	\$ 19,239,000
Greenville/Spartanburg		382.00	\$ 5,730,000
Cincinnati		52.60	\$ 789,000
Based on:			
300 operating days per year.			
1 round-trip flight on each sector per day.			
Cost based on \$15,000 per block hour.			

# GOVERNMENT HUB











FLORENCE RESPONSE

**BEHIND THE SCENES AT N.C. GLOBAL TRANSPARK**  
LENOIR COUNTY

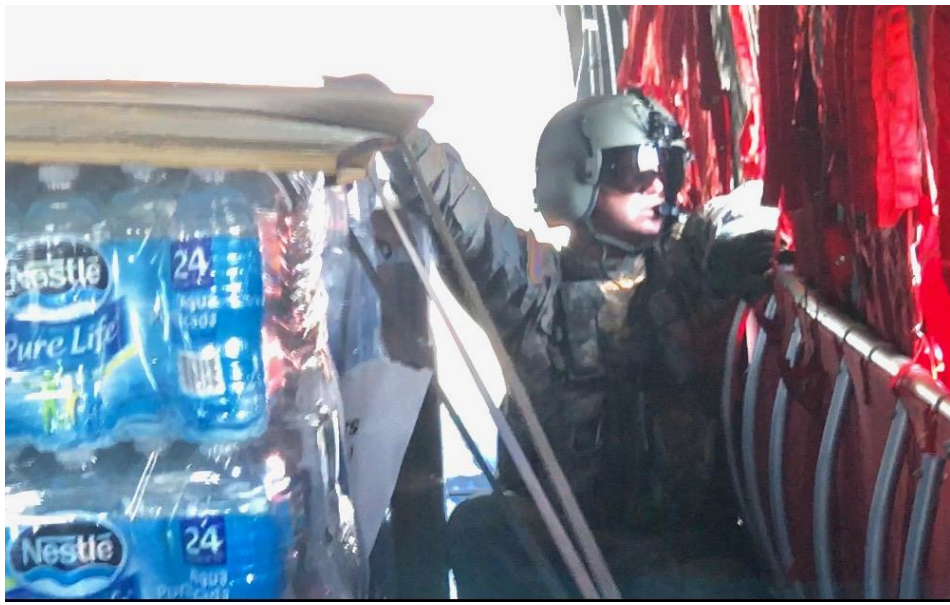


FLORENCE RESPONSE

ON YOUR  
SIDE

**BEHIND THE SCENES AT N.C. GLOBAL TRANSPARK**  
LENOIR COUNTY





NORTH CAROLINA **GLOBAL**  
TRANSPARK





# Hurricane Florence Response

- Over 5,000 Rescue Missions
- Over 930 Air Operations
- 35 States – First Responders (Local, State, Federal, Military)
- Over 2,600 Engaged at the NCGTP
- 250 FEMA Staff – Housing / Ops

# Disaster Response Simulation Base

NORTH CAROLINA **GLOBAL**  
TRANSPARK



**FEMA**

(Concept\*)



# INNOVATION





# NORTH CAROLINA GLOBAL TRANSPARK

NORTH CAROLINA GLOBAL TRANSPARK

March 20 2018

U.S. CARGO SYSTEMS

Unmanned Cargo Aircraft Conference



Lenoir COUNTY ECONOMIC DEVELOPMENT

Lenoir COMMITTEE OF 100, INC.

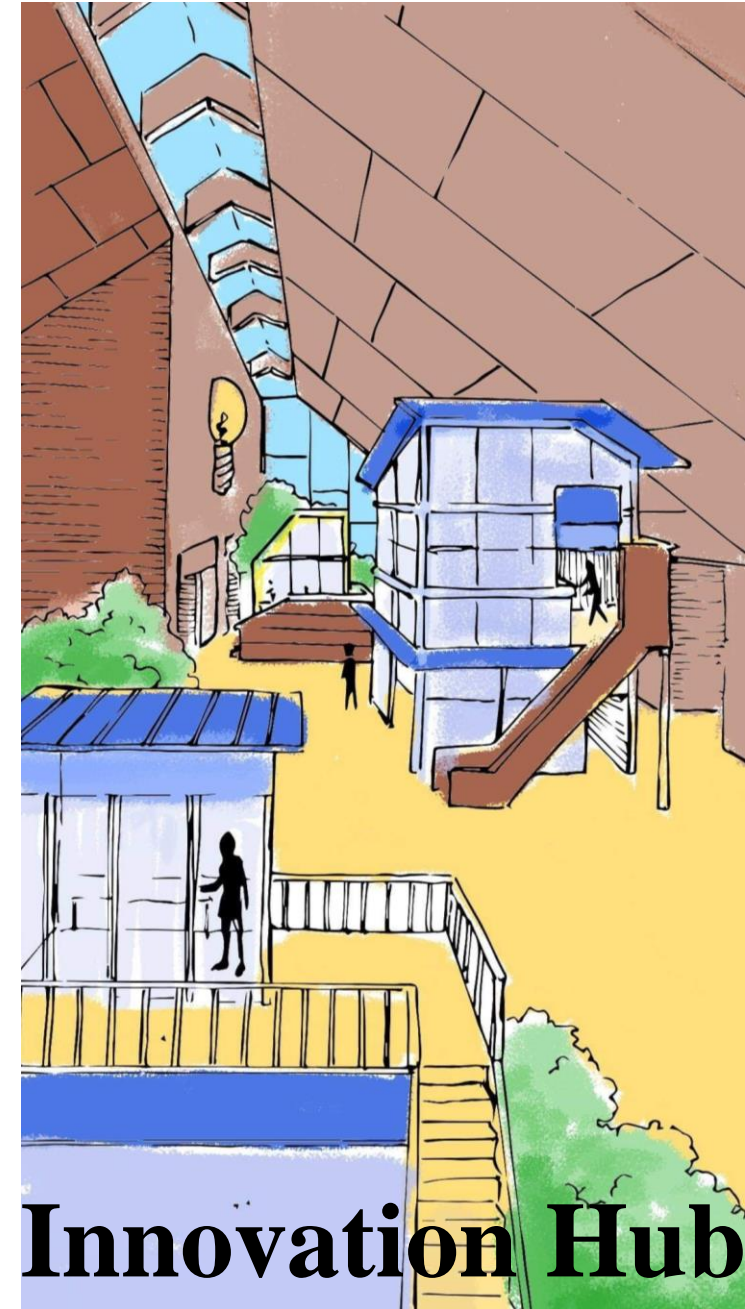
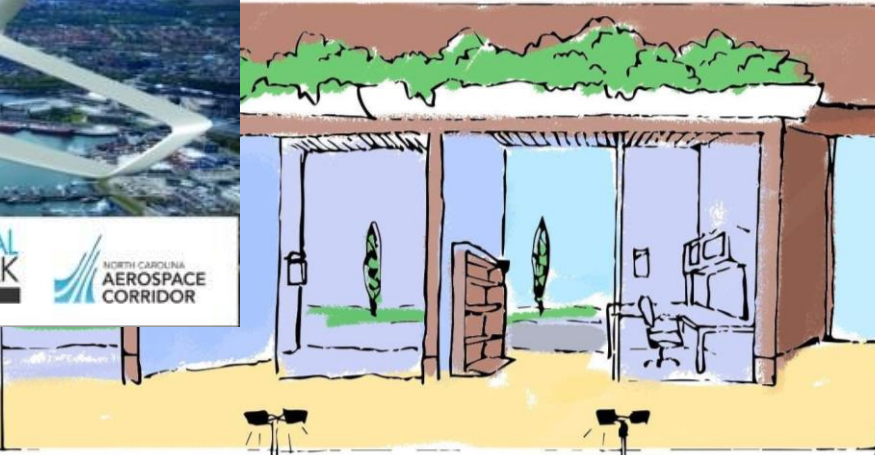
Lenoir Community College

NORTH CAROLINA GLOBAL TRANSPARK FOUNDATION

NORTH CAROLINA AEROSPACE CORRIDOR

North Carolina DRONE SAFE

AMBULANCE  
AED





# GOALS: MOVING FORWARD



**FIVE YEAR STABILITY:  
FUNDING & IMPLEMENTATION**



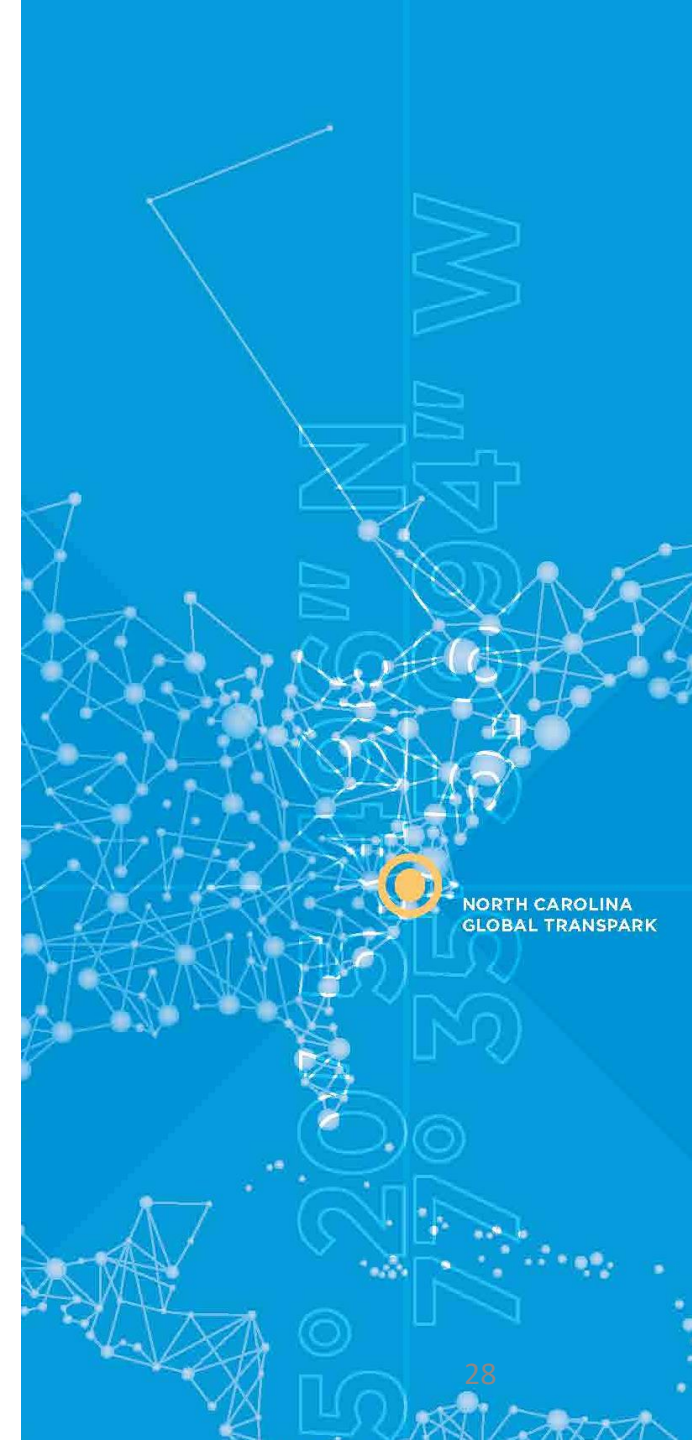
**FOCUSED STRATEGY  
GLOBAL CONNECTIVITY**



**PROGRESSIVE MARKETING PLAN,  
ECONOMIC DEVELOPMENT,  
PARTNERSHIPS**



**MEASURABLE, ACCOUNTABLE,  
ACTION STEPS**



# NORTH CAROLINA GLOBAL TRANSPARK

**Allen M. Thomas**

**Executive Director**

**3800 Highway 58 N**

**Kinston, NC 28504**

**amthomas@ncdot.gov**

**252.523.1351 ext. 305**

**[www.ncgtp.com](http://www.ncgtp.com)**

